

View input and output screens in real time on another CICS terminal.

View HTML pages sent to another browser served out from CICS.

Provides the ability to collect screens based on almost any criteria including the contents of the screen.

Collect the screens for replay later.

Collect screens generated by a specified transaction executed on any terminal.

You control who can Spy and who can be spied upon... flexible security.

SPY on 3270 terminals and HTML served out to a browser from CICS

MacKinney Systems

CICS/SPY_{2.0}



**For Security
Help Desk
Customer Service Quality**

Types of SPY sessions

Terminal ID

Collects all input and output screens from a particular terminal. Can specify this type of session by Termid, Netname, Userid or Operator ID.

TRANSID

Collects input and output screens generated by a particular transaction ID on any terminal in CICS.

*ALL

Collects input and output screens from all the terminals in a CICS.

HTML

Collects HTML pages sent by CICS to a browser such as Netscape Navigator or Internet Explorer. Can specify this type of session by IP address or HOSTNAME.

Content Sensitive

A user replaceable Spy module provides the customer the ability to Spy based upon almost any criteria, including the content of the screen.

Who's On List

Any of the above 3270 type Spy sessions can be initiated from a display of all the terminals currently using CICS.

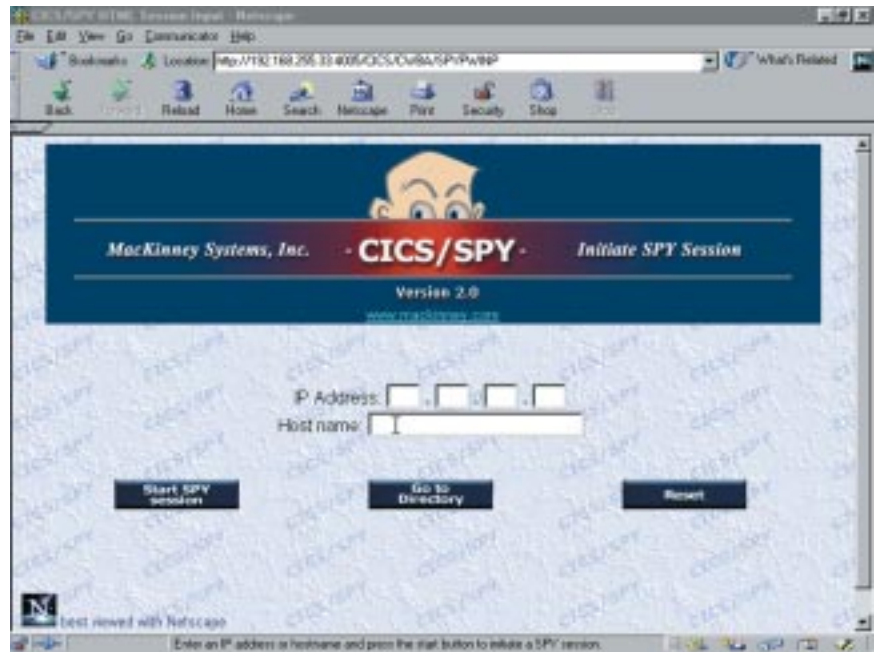
Automatic

Any of the above types of Spy sessions can be started automatically everytime CICS is brought up.

Initiate SPY sessions using this CICS screen.



Initiate SPY sessions using this page on your browser.



New!

New!

Who's On Screen

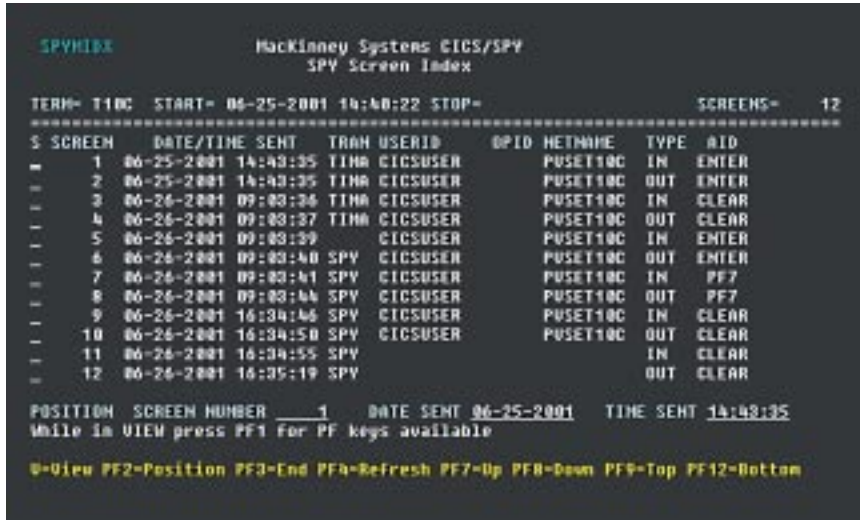
The Who's On screen provides a list of terminals currently in use in CICS. A spy session can be started on any one of the displayed terminals by selecting it. Terminals displayed can be selected by up to thirteen criteria such as transaction ID, Signed on status, active status, Userid, etc.



Screen Index

Display a selection list of all screens collected

To assist in viewing a SPY session an index screen for the SPY session can be displayed. The Spy Screen index displays a selection list of all screens collected for a particular Spy session. You can begin viewing a spy session at any Screen. You can position the Spy index screen based on time and date sent.



Each one of the lines shown on this screen represents a screen that has been collected by CICS/SPY.

Modes of Spy sessions

Concurrent

Displays the screens being spied upon in real time. In this mode the screens (input and output) generated by the SPY'ed upon terminal are also shown immediately on the SPYer's terminal.

Non-Concurrent

Screens are collected into a database for review at a later time. Screens collected can be "replayed" forwards and backwards, you can begin the display of collected screens at any point in the Spy session.

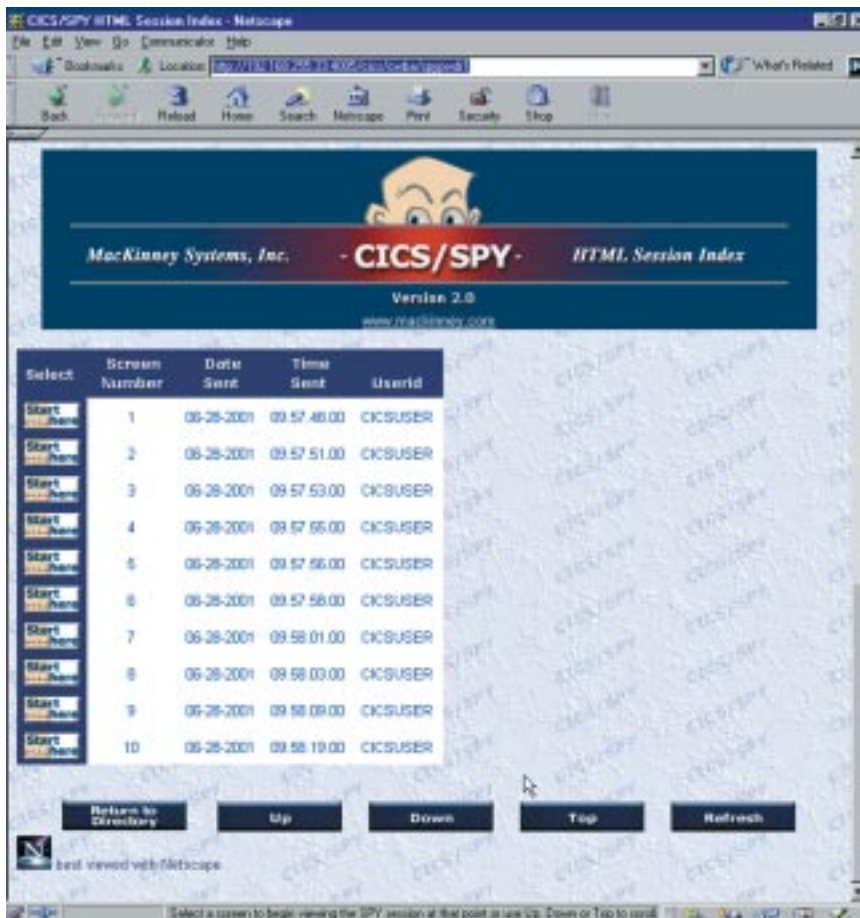
Security

CICS/SPY provides a flexible security facility that limits who can be spied upon and who can do the spying.

HTML Index

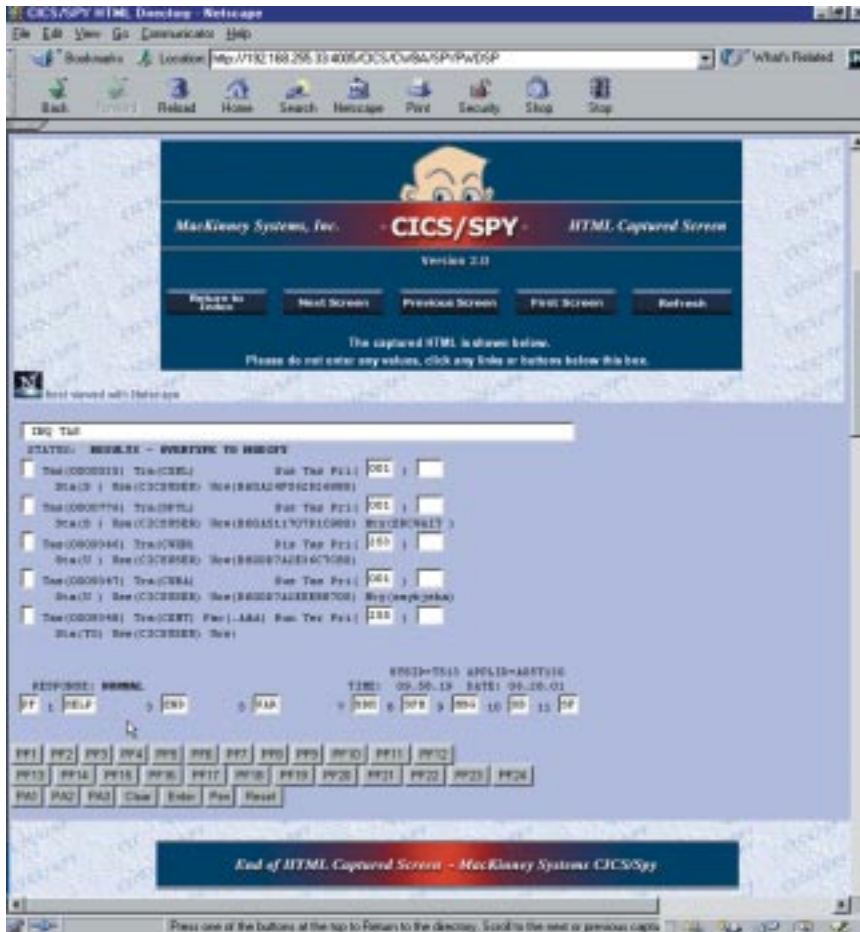
Display screens collected from HTML Sessions

The HTML Spy Screen Index can be obtained from the HTML Spy Session Directory. You can begin displaying pages at any point by pressing the "Start Here" button. This screen is available only on a browser such as Netscape Navigator or Internet Explorer.



Each of the lines shown on this page represents a page that has been collected by CICS/SPY.

Sample HTML page captured by CICS/SPY from a browser



Call
(417) 882-8012
or download
CICS/Spy from
mackinney.com
for a
FREE 30 day
trial!

Content sensitive Spy sessions

SPY provides a user replaceable module giving the customer the ability to SPY based upon almost any criteria, including the content of the screen. SPY provides all the relevant information about all screens generated in CICS (including the screen itself) and the user replaceable module can decide whether or not the screen is to be recorded or discarded. The uses of this type of Spy session and the criteria that can be applied is almost limitless. Below are some examples of how this type of Spy session might be used:

- Collect all the screens generated by a particular USERID on any terminal.
- Collect only the screens on which a particular customer number appears.
- Collect screens from a selected terminal only during a specific time of day.

**MacKinney
Systems, Inc.**
2740 S. Glenstone, Ste. 103
Springfield, Missouri 65804

Sales and Support:
(417) 882 8012

Email:
sales@mackinney.com

Fax:
(417) 882-7569